

# **Learning Disability Strategy 2018-2028**

Children & Young People  
Scrutiny Committee

27<sup>th</sup> March 2018

# Learning Disability Strategy A New Approach

The new Herefordshire council and CCG Learning Disability Strategy aims to place greater emphasis on delivering changes that have a measurable and positive lifelong impact on the lives of people with learning disabilities, including those young people aged 14-25 preparing for adulthood.

# People with a Learning Disability Living in Herefordshire

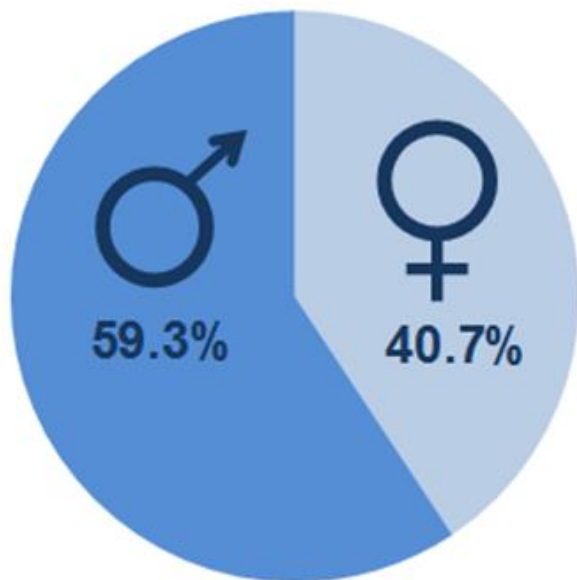


There are no reliable statistics characterising accurately how many people there are with learning disabilities across the UK.

It has been estimated that the numbers on the GP registers represent only 23 per cent of people with LD.

There are estimated to be 3,600 people with LD in Herefordshire in 2017, which represents 2.32 per cent of the total population in the count.

# People with a Learning Disability registered with GP's in Herefordshire



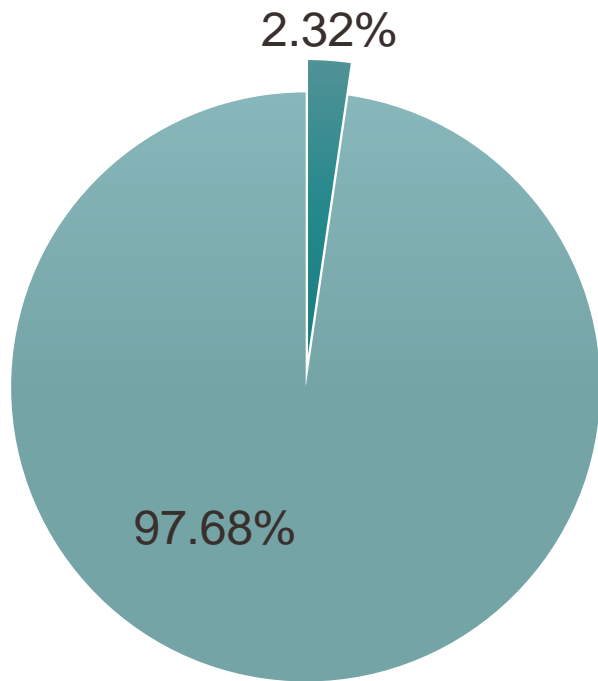
In 2015/16 the number of people aged over 14 on GP LD registers in Herefordshire were:

- **534 Males (59.3%)**
- **366 Females (40.7%)**
- **Total = 900**

Similar gender proportions were observed both nationally and regionally.

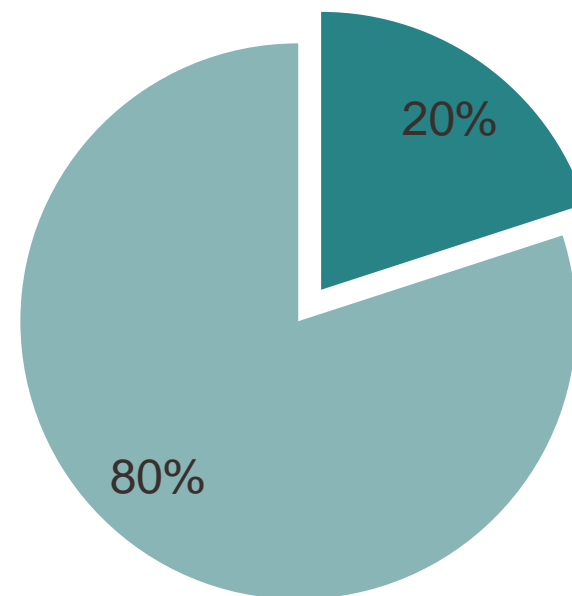
# Adults with a Learning Disability Comparative Data

## Population



■ Adults with LD ■ Non-LD Population

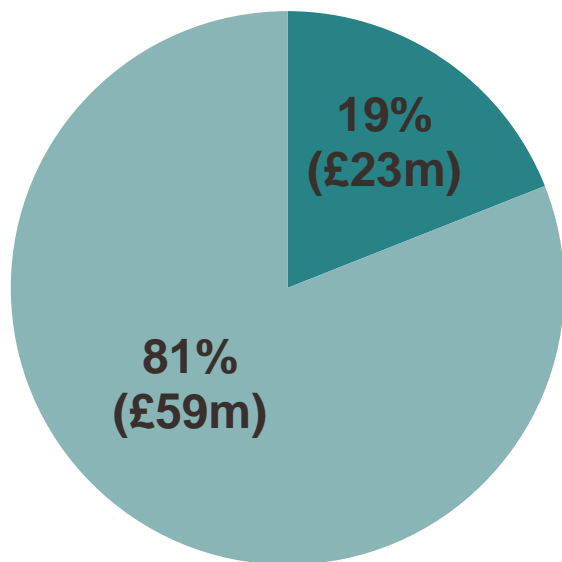
## Adult Wellbeing Budget



■ LD expenditure ■ Non-LD expenditure

# Adults with a Learning Disability - Finance

## Adult Social Care Expenditure (based on forecasts for 2018/19)

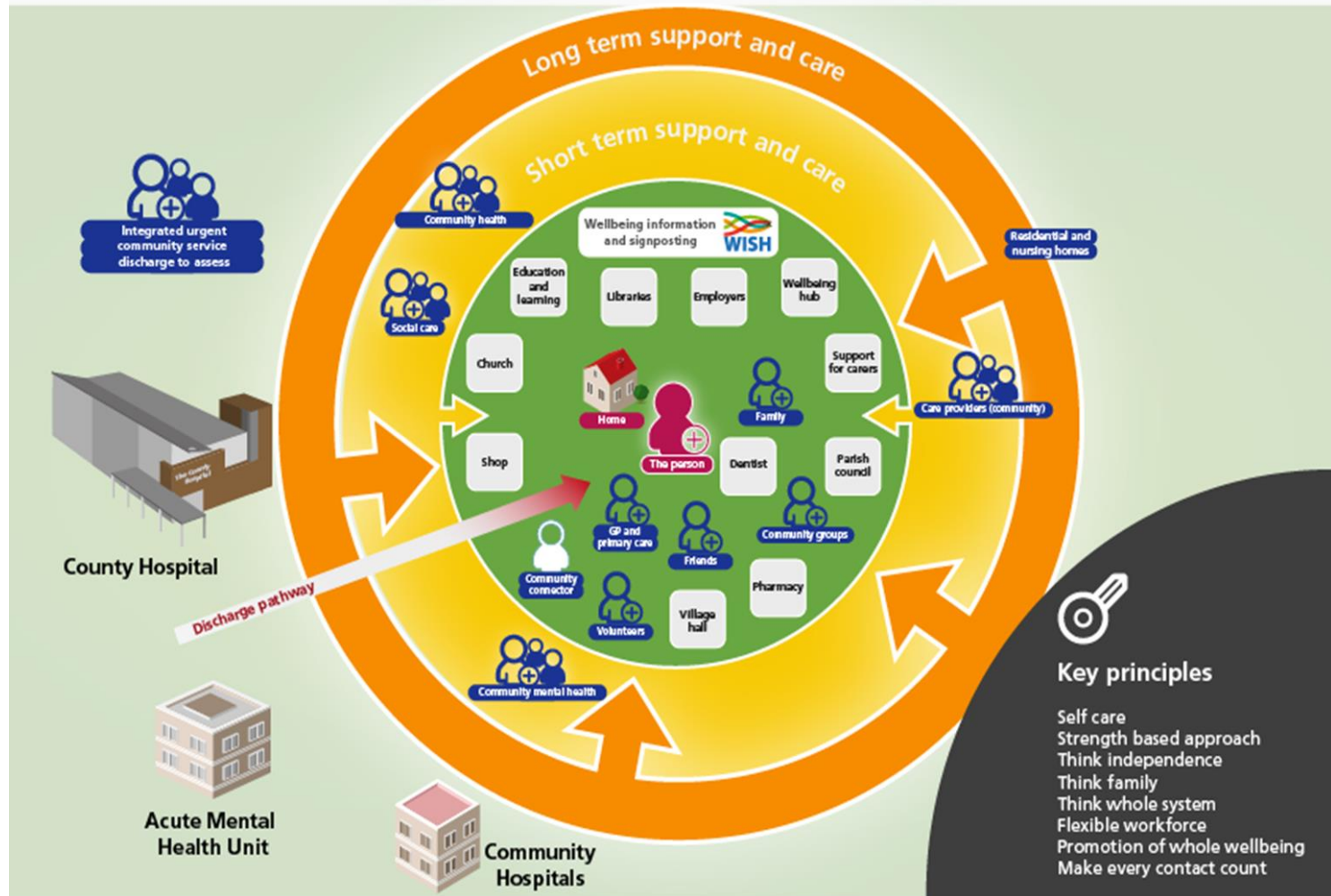


The CCG spend an additional £7m a year on learning disability services, making a total combined annual spend of £30m on learning disability resources.

■ LD Spending ■ Non-LD Spending

# Delivery of the AWB blueprint

## The Blueprint



# Specific Challenges

## **Where People Live:**

- People lack choice about where and with whom they live
- People lack access to accommodation arrangements that support their independence

## **Employment, Training and Daytime Activity:**

- People lack opportunities for paid work and meaningful training
- Council and NHS need to lead by example by offering employment opportunities for adults with a learning disability

## **Being Healthy and Safe:**

- There are still huge health inequalities, e.g., decreased life expectancy, restricted access to primary care, acute care and universal routine screening programmes

## **Citizenship, Choice and Control:**

- Reduced opportunities to demonstrate social value and contribute to the community
- Too few people have choice and control, e.g., not enough direct payments, inadequate circles of support and lack of true advocacy



# Next Steps

- Complete review of the service and support available in Herefordshire (Market Condition Report)
- Review of specialist health services delivered by the Community Learning Disability Team (2G)
- A review of the role of the Learning Disability Partnership Board